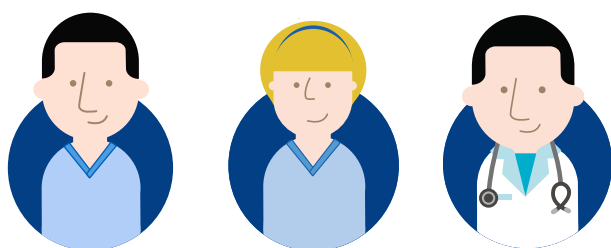


If you have a **non life-threatening problem** and you're not sure what to do, **go straight to NHS 111**

If you need an **urgent face-to-face appointment** NHS 111 may direct you to your nearest **urgent treatment centre**.



What is an urgent treatment centre?



Staffed by **healthcare professionals**.



Provides medical advice or treatment for urgent conditions **that aren't life threatening**.

Provides direct, **fast access** to the treatment you need, **anywhere in the country**.



Open every day of the year, 12 hours a day, including **bank holidays**.

Can treat conditions such as strains and sprains eye problems, suspected broken limbs, abdominal pain and minor head injuries.

Run diagnostic tests, and in most cases, **X-rays**.



111.nhs.uk

Monday:
Tuesday:
Wednesday:
Thursday:
Friday:
Saturday:
Sunday: