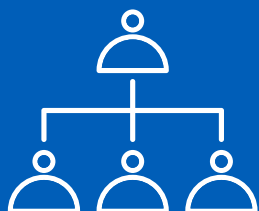


Stop the spread of Coronavirus

COVID-19 Vaccinations



Who can get the vaccine?

The Government has decided in what order people will get the vaccine, based on scientific advice they have received. People who are vulnerable because of a health condition, those with learning disabilities and frontline health and social care workers, are a priority to receive the vaccination. If you are not in one of these groups, you will be invited to have the vaccine by specific age groups.



Will the vaccine protect me?

The vaccine will reduce your chance of developing COVID-19 around 2-3 weeks after you receive your first dose. It's important you get your second dose to receive the full benefit of the vaccine. You will be offered your second dose no sooner than 10 weeks after you receive your first dose. Some people who have been vaccinated may still get COVID-19, but it should be much less severe.



Is the vaccine safe?

The vaccine is safe. The NHS will not offer any COVID-19 vaccinations to the public unless independent experts have said it is safe to do so. The vaccines have been tested on tens of thousands of volunteers from all over the world. Funding and scientific resources allowed all of the usual steps for testing vaccines to be done more quickly than usual.



What are the common side effects?

After your vaccine you may feel tenderness in the arm where you got your injection. You may also feel tired, have a headache, or feel like you have a mild case of the flu. These symptoms normally last only a few days. So far, millions of people have been given a COVID-19 vaccine and reports of serious side effects have been very rare.



Can I have the vaccine if I don't eat meat or am vegan?

The approved COVID-19 vaccines do not contain any animal products or egg. This means that you can have the vaccine if you are vegan or vegetarian, or if you do not eat specific types of meat because of your religion.

Find out more about the COVID-19 vaccination programme in Cambridgeshire and Peterborough via www.cambridgeshireandpeterboroughccg.nhs.uk.