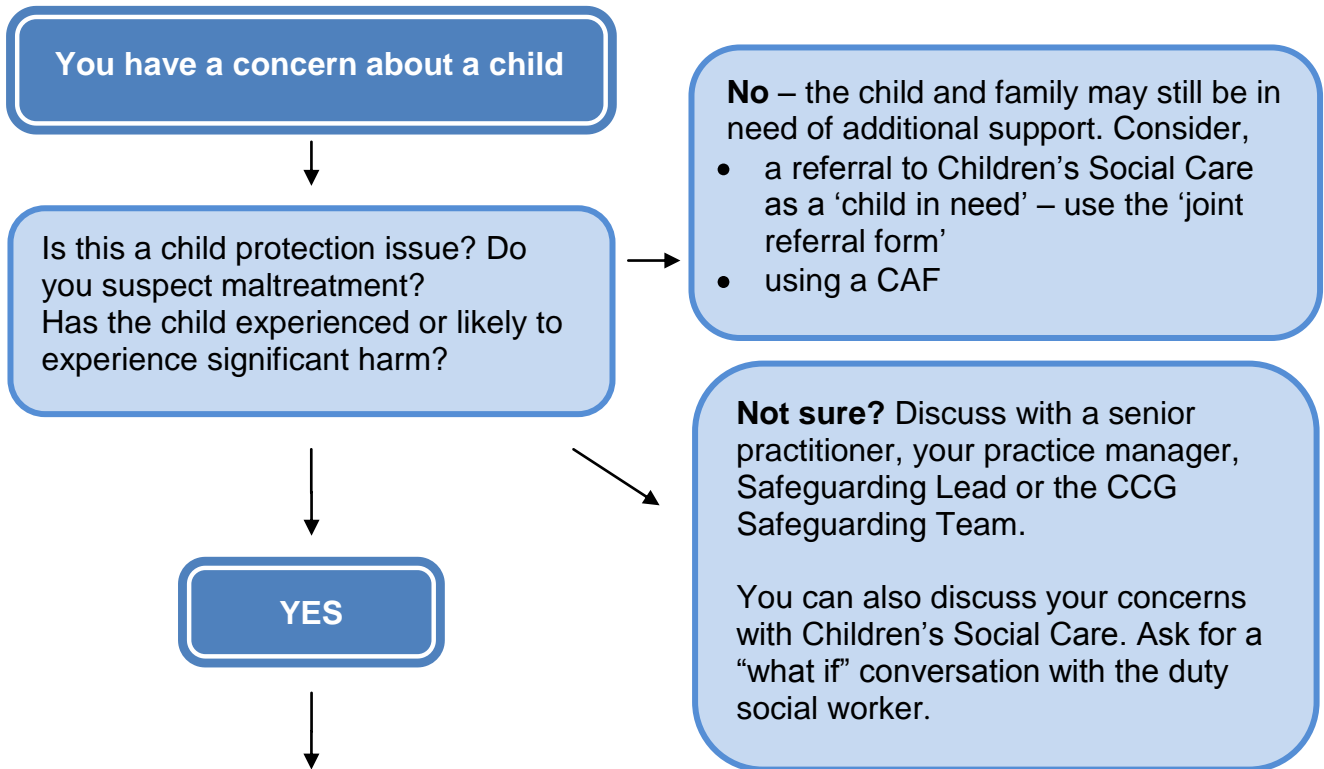


What to do when you have concerns about a child



A referral must be made to Children’s Social Care. Delay should be avoided. Non urgent referrals can be made by using a ‘joint referral form’. Urgent referrals can be made by phone and followed up with the form.

Cambridgeshire Children’s Social Care	0345 045 5203
Peterborough Children’s Social Care	01733 864180 or 864170
Out of hours and weekends	01733 234724

NB: It is good practice to discuss your concerns with the parents at this stage unless there is a good reason for not doing so.

It is the responsibility of social care to acknowledge the receipt of your referral and decide on the next course of action within one working day. If you have not heard anything from social care it is **your responsibility** to chase this up. If you have a disagreement with another agency (e.g. Children’s Social Care), consider **escalating** your concerns. The CCG Safeguarding Team can help you with this if necessary

The ‘joint referral form’ and contact details for the CCG Safeguarding Team (including Designated Doctor and Designated Nurse) are kept up to date on the CCG public website.

www.cambridgeshireandpeterboroughccg.nhs.uk/local-services/Safeguarding-children.htm